

PFMEA: Failure Mode & Effect Analysis – Workshop



REVERSE PFMEA WORKSHOP – SHOPFLOOR ORIENTED

INPUTS / REQUIREMENTS

- ❑ PFMEA Premium Training (Selected Topics)
- ❑ Multi-functional Team: Quality, Process, Engineering, Logistics, Incoming, Maintenance, etc.
- ❑ Current PFMEA documentation
- ❑ Current Process Control documentation
- ❑ Process Flow Diagram

P3 APPROACH (ACTIVITIES / METHODS & TOOLS)

- Reverse PFMEA – Knowledge Standardization / Leveling
 - Initial participants assessment
 - Training focus on selected topics to standardize knowledge
 - Team/s creation and processes selection
- Customer Requirements Evaluation
 - Check for proper inputs in pFMEA (Severity, preventive action and control methods) – Input from Customer (i.e., from SCCAF)
 - Check for Special Characteristics in Control Plan (control methods and reactive plan)
 - Identification of Systemic weaknesses
- On-site Operative Review for Control Effectiveness
 - Verify PFMEA & CP inputs for production lines (selected processes)
 - Assess effectiveness of defined/implemented preventive actions and controls – lack of identification for failure modes
- Proposal for improvements (inputs for pFMEA workshop)
 - Process assessment results and prioritization

OUTCOMES / DELIVERABLES

- ✓ PFMEA filled out as a risk management tool instead of simple documentation
- ✓ Clear potential causes properly identified and linked with potential failure modes
- ✓ Critical and significant characteristics properly cascaded from customer design to the manufacturing process
- ✓ Proper evaluation of severity, occurrence, criticality and risk prioritization

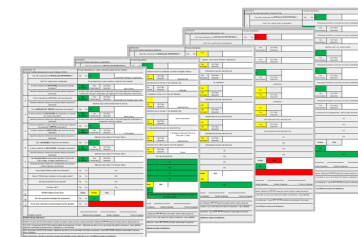
Note: Workshop activities take place in a meeting room for data analysis and discussions, and on the shopfloor to assess potential causes, preventive controls and detection systems.

PFMEA – Initial Version

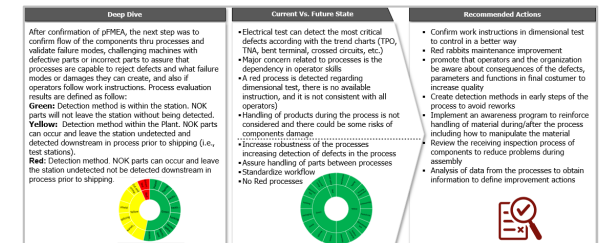
Initial pFMEA



On-site reverse pFMEA Workshop Execution



Processes Evaluation



Reverse pFMEA Assessment Results